



*The Best Value in Binding Solutions  
Now Gives You Options.*



*Learn more about how AB20 can support  
your success by helping you manage  
your feed quality challenges.*

phone: 800.677.4623  
[www.pahc.com](http://www.pahc.com)



**Phibro**  
ANIMAL HEALTH CORPORATION

HEALTHY ANIMALS. HEALTHY FOOD. HEALTHY WORLD.®

AB200918 ©Phibro Animal Health Corporation. Phibro, Phibro logo design, Healthy Animals. Healthy Food. Healthy World.,  
AB20, DOA and Dynamic Quality Assurance are trademarks owned by or licensed to Phibro Animal Health Corporation or its affiliates.

**AB20**<sup>®</sup>  
GRANULAR

# The Best Value in Binding Solutions



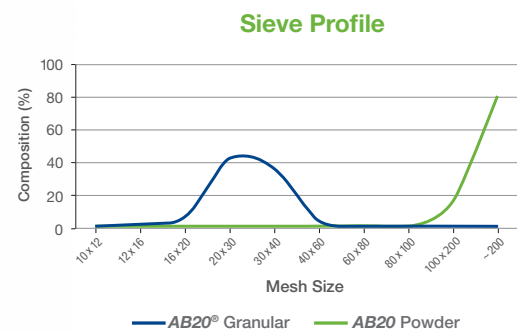
Efficacy and value are critical to supporting your bottom line, which is why we ensure the highest standard of quality in everything we do. Our unique **AB20®** nutritional specialty product is a bentonite adsorbent that binds moisture present in feed. Lower moisture reduces the potential for mold growth, and lowering mold growth improves feed quality—important when you consider some molds produce harmful mycotoxins.

And now we're pleased to announce our technical, engineering and quality assurance teams have worked together to design a new manufacturing process to make a premium, granular form of **AB20** available.

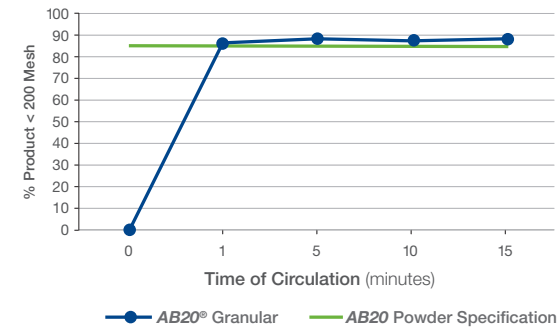
It's the same great **AB20**—now available in a consistent, small granule that is free flowing and with a higher bulk density than the powdered form, while still mixing easily and uniformly. The new granular form will work well for operations with micro handling systems and will significantly reduce dust levels.

## Physical Properties.

**AB20® Granular** was developed to provide the same efficacy as the traditional powdered **AB20**, but with better handling characteristics. **AB20® Granular** offers a larger particle size and contains a higher bulk density, with only a small difference between the compacted and loose density. The result is a product that is less dusty and easier to blend.



## Time Dissolution of AB20 in Water

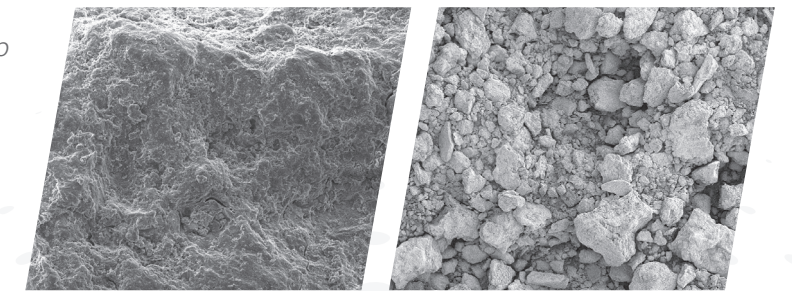


## Granular Dispersion.

Our new **AB20® Granular** starts with a larger particle size that readily disperses when placed in water. Within one minute of gentle mixing, over 80 percent of the product contained a particle size less than 200 mesh, as tested by laser diffraction, which matches the particle size specifications of our traditional **AB20**.

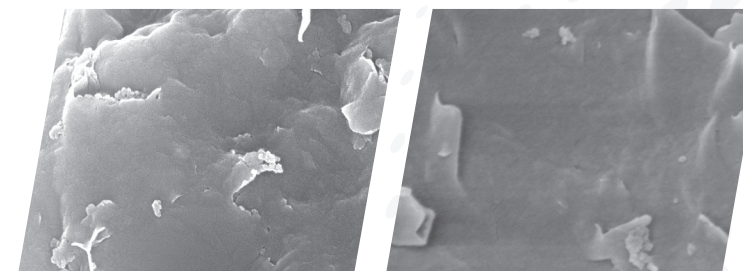
## Surface Characterization.

Scanning Electron Microscopy (SEM) images show close-up views of both our granular and powder **AB20** products. Although our **AB20® Granular** is a larger particle up close, both products contain the same layered structure expected of a hydrated sodium calcium aluminosilicate. The layered alumina and silica crystal structure of this clay is critical in the efficacy of our products. (SEM photos from Missouri S&T)



AB20® Granular 200x

AB20 Powder 200x



AB20® Granular 50,000x

AB20 Powder 50,000x

## See for Yourself.

None of these changes will impact the efficacy of **AB20® Granular** nutritional specialty product—and **AB20** will still be available in its original powder form. Our latest addition of the granular form still meets our stringent evaluations and proprietary validation testing through our **Dynamic Quality Assurance® (DQA®)** program and is backed by the strength of Phibro Animal Health.

